



Shade MAKER

HELPFUL HINT

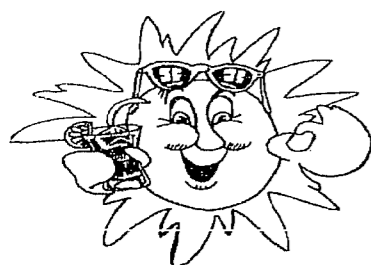
Some silicone spray or liquid soap sprayed or brushed into the awning rail will help ease this next part of the installation procedure. Also, we suggest using a third person on a ladder to help feed the awning into the rail.

19. With your helper, pick up the awning and rest the weight on the ground with the awning feet. Start the awning bead and fabric into the awning rail. With your helper walk the awning into the awning rail, remembering to keep the awning parallel with the vehicle or structure, all the way to the originally installed position. Raise the bottom uprights to original height and snap awning feet into bottom mounting brackets. Re-attach the top mounting brackets to vehicle or structure.

20. Remove tape or bands from arm assemblies. Remove tape from clutch assembly locking mechanism and release locking mechanism to allow awning to extend. Raise and lower awning 3 or 4 times to check for alignment and tracking. You can pull the awning fabric in the awning rail and roller tube slots to adjust for alignment.

21. Anchor awning fabric by fastening awning tracking screws through awning fabric, plastic rope and awning rail. Anchor both awning fabric and valance fabric onto roller tube by fastening with sheet metal screws through fabric, plastic rope and into roller tube slots. When fastening last screw in each piece of fabric, pull fabric taut before anchoring with screw.

THIS COMPLETES THE AWNING FABRIC REPLACEMENT PROCEDURE



Shade MAKER

SHADEMAKER PRODUCTS CORP
PO BOX 5271
BUFFALO GROVE, IL 60089
Phone 773-955-0998

Shademaker Awning Fabric Replacement

Dear Customer:

Thank You for purchasing the ShadeMaker Awning Replacement Fabric. When properly installed and maintained this product will provide you with years of protection and enjoyment. We urge you to please take a few moments to read these installation instructions completely to familiarize yourself with the procedure to remove your old awning fabric and replace it with your new ShadeMaker fabric. Should you need technical assistance please call **1-888-611-2984**

This procedure is best accomplished with two people and for awnings more than 20' in length you may want to consider having a third helper available for the reinstallation of the awning roller tube to the vehicle or structure after the new fabric has been attached to the roller tube. In any case we recommend doing this procedure on a calm day or, if possible, indoors. You should have a clean smooth space large enough to completely unroll your awning.

You will need some common tools: Safety glasses, Screwdrivers-both slotted and phillips head, hammer, Vise Grips, Pop Rivet Tool and 1/8" and 3/16" pop rivets, electric drill and 1/8" and 3/16" drill bits, 10 each sheet metal screws #10x3/4", socket wrench set or adjustable wrench, nail or cotter pin, 2' or 3' of 2" wide tape (duct tape, masking tape, strapping tape), silicone spray or liquid soap, common file, ladder long enough to reach awning comfortably.

If you have an old style end cap on your awning roller tube and it does not have slots corresponding to the rope channels on the roller tube then: We strongly recommend that you perform the End Cap Slotting Procedure and to accomplish it you will need a drill with 3/16" bit, hacksaw and/or round file. The End Cap Slotting Procedure should be done after the awning and roller tube have been removed from the vehicle or structure for ease of handling.

End Cap Slotting Procedure:

1. Using a 3/16" drill bit, drill a hole in the left (as you face the vehicle) black end cap, centered on the roller tube channel in which the awning valance is installed. **SEE FIG. 1**
2. Using a hacksaw or file, cut a slot in outer edge of end cap down to the drilled hole. This will enable you to slide the rope in the hem of the valance into and out of the roller tube channel without removing the end cap. **SEE FIG.2**
3. Using a file, remove all burrs on end cap and roller tube before removing the old valance/awning fabric and installing the new valance/awning fabric. **SEE FIG.3**
4. Repeat steps 1,2 and 3 for the roller tube channel in which the awning fabric is installed.

NOTE: SEE FIG. 9 FOR VIEW OF COMPLETED SLOT.

! CAUTION !

The spring mechanism in the awning roller tube has been pre-wound and is under strong tension!

Improper disassembly, handling or assembly can cause injury to YOU or damage to your awning or the awning mechanism.

FABRIC INSTALLATION INSTRUCTIONS

1. Shift locking mechanism on awning to allow for awning extension and extend awning from vehicle or structure about 12".

2. Remove the screws that secure the awning fabric to the awning rail attached to vehicle or structure. (These screws are usually self-tapping screws that are driven through the fabric, rope and awning rail to keep the awning fabric from shifting in the awning rail and tracking crooked.) **SEE FIG. 4**

3. Remove mounting screws from top mounting brackets that affix awning mechanism to vehicle or structure.

4. Unlatch awning foot from bottom bracket on each side, extend bottom upright to ground. Raise each upright one adjustment hole, so that the awning roller tube is roughly parallel height to awning track. Tape or strap both arms and their rafters so that they will not slide apart.

5. Keeping the awning roller tube parallel, carefully walk the awning rope out of the awning rail.

6. Lay the awning roller tube assembly on the ground with the mechanism assembly screws facing up.

If your awning end caps are slotted proceed to step #12. If you have an old style end cap and if you are going to perform the End Cap Slotting Procedure, please refer to instructions above; should you choose not to slot the end cap, please note the precautionary message before proceeding.



! CAUTION



The spring mechanism in the awning roller tube has been pre-wound and is under strong tension! Improper disassembly, handling or assembly can cause injury to YOU or damage to your awning or the awning mechanism.

7. On the **hub** of the left black end cap you will find a hole, also there is a hole through the **awning torsion assembly shaft**; these holes must be aligned and a cotter pin or nail must be **inserted all the way into and thru the shaft. This prevents the torsion assembly spring from unwinding.** Make sure you bend the ends so the pin does not fall out. **SEE FIG.5**

8. Using a length of tape secure the clutch to the roller tube so it will not shift accidentally. **SEE FIG.6**

9. The awning uprights may now be safely removed. Unscrew the Top Caps from the awning uprights. **SEE FIG. 7**

10. Remove the awning uprights. Roll the awning fabric out on a clean smooth surface. There are awning fabric tracking screws (or pop rivets) on each end of tube. These are screws (or rivets) that are fastened through the awning and valance fabrics, and into the roller tube, to keep the awning tracking straight when it is rolled and unrolled. Remove the awning fabric tracking screws (or rivets) from both the awning and valance. **SEE FIG.10**

11. If your awning end cap has slots to facilitate sliding fabric out without removing end cap you may proceed to step 13. Make sure you mark the slots in roller tube to insure that the valance and awning fabric

replacements are put back into the correct slots.

12. If your awning end cap is not slotted, and you have chosen not to cut slots, you must remove the hub assembly from one end. We recommend removing the hub which has the cotter pin or nail through it, however either hub may be removed, to be able to slide the fabrics out of the roller tube slots. To remove the hub you must drill out the pop rivets that secure the hub to the roller tube (or unscrew the sheet metal screws that serve that purpose). **SEE FIG. 8** To facilitate re-assembly make sure you mark lines on both the hub and roller tube that will serve to re-align them. Slide hub out of roller tube a sufficient distance that you will be able to slide fabric from slots. **SEE FIG.9.**

12. Remove the roller tube tracking screws from each end of the awning and valance (see step 10).

13. With awning laying flat, slide roller tube off of fabric, being careful not to damage either. **SEE FIG.11**

14. Unfold the new fabric and lay it on top of the existing fabric in the exact same position. Be sure the new fabric is the correct size and color. Compare roller tube rope size in the new fabric to the rope in the old fabric. All awnings use 1/4" rope in the awning rail, however roller tube rope sizes may vary. If the rope in your old awning roller tube is other than 1/4", you must replace the roller tube ropes in the new fabric with the correct size, either 5/32" or 3/16", both of which have been supplied with the new fabric. To replace the 1/4" rope, tape the correct size rope to one end of the installed 1/4" rope and gently pull from the other end until the correct size rope is centered in the hem. Do the same with the valance rope. **SEE FIG.12**

15. Install the new valance fabric first. Slide the fabric into the correct slot and make sure it is centered on the roller tube. Next, in a similar fashion, install the new awning fabric. If you have not had to remove the hub assembly, you may proceed to step 16. If hub assembly has been removed you must now replace it using pop rivets or #10x3/4" sheet metal screws.

16. Hand roll up awning on roller tube with top of fabric on the outside.

17. Replace roller assembly into upright arms and fasten with top cap screws.

18. Make sure awning rail (on vehicle or structure) is flared out on feed end and all sharp edges and any burrs have been removed for ease of insertion and to insure fabric will not be damaged.

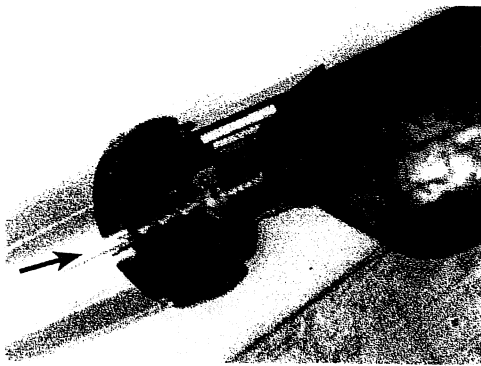


FIG. 1

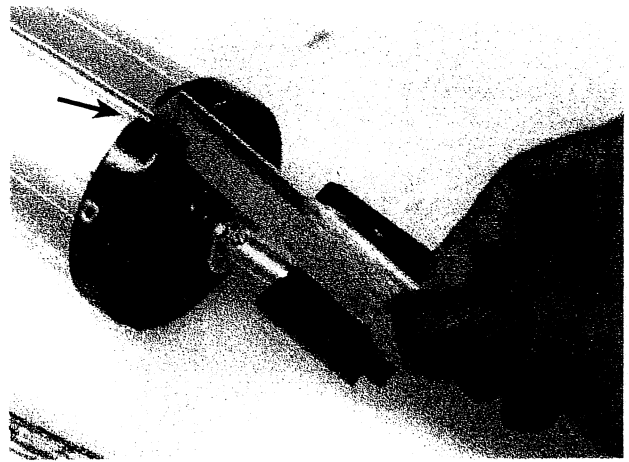


FIG. 2

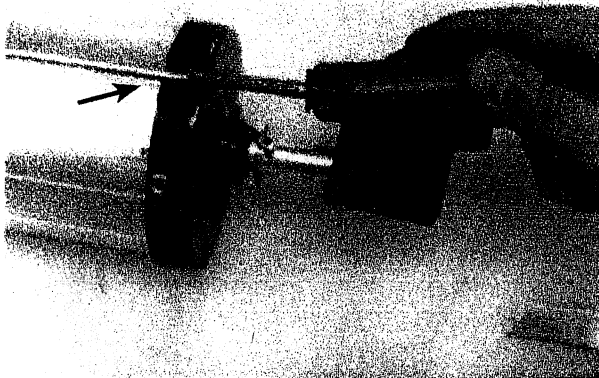


FIG. 3

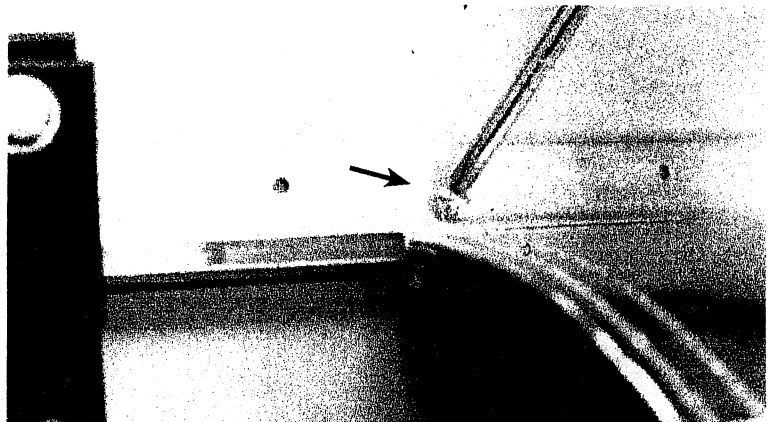


FIG. 4

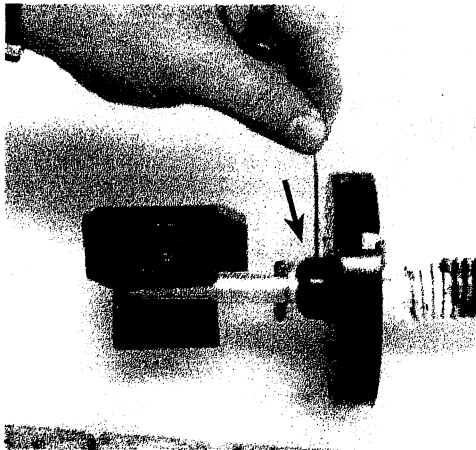


FIG. 5

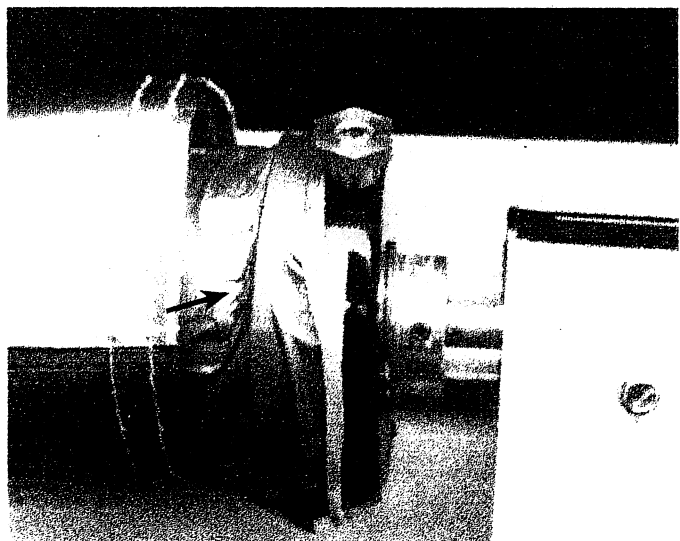


FIG. 6



Fig. 7



Fig. 8



FIG. 9

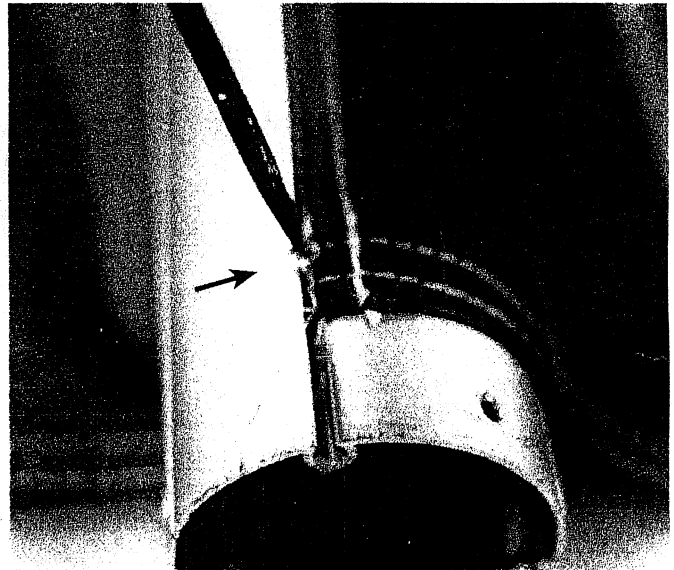


Fig. 10

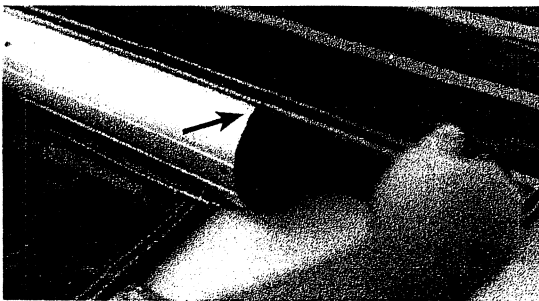


Fig. 11

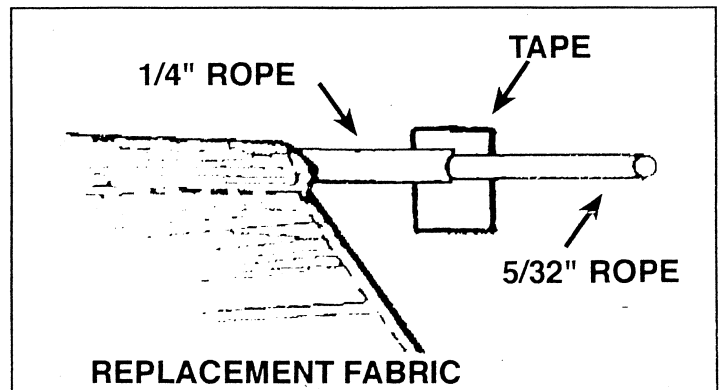


FIG. 12